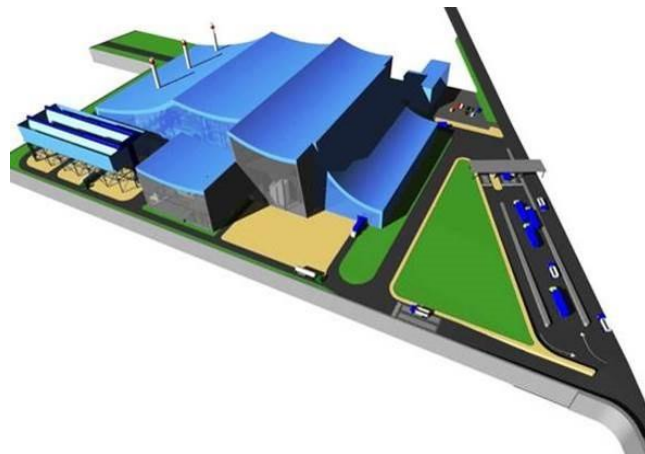


## Energy from Waste

### First waste incineration plant in Istanbul

#### Project Description

The construction of this municipal waste incineration plant near the new airport in northwestern Istanbul is the first plant in Turkey of this size and one of the largest Emergency Power Control (EPC) projects in the waste incineration sector in Europe. The new construction project includes construction and electrical engineering, procurement, complete implementation during the activity period, commissioning, and one year of operating the plant. Starting in 2021, the three incineration lines of the plant will incinerate one million metric tons of waste per year. The plant will use the waste incineration to feed approx. 70 MW of electric power into the 154 kV grid.

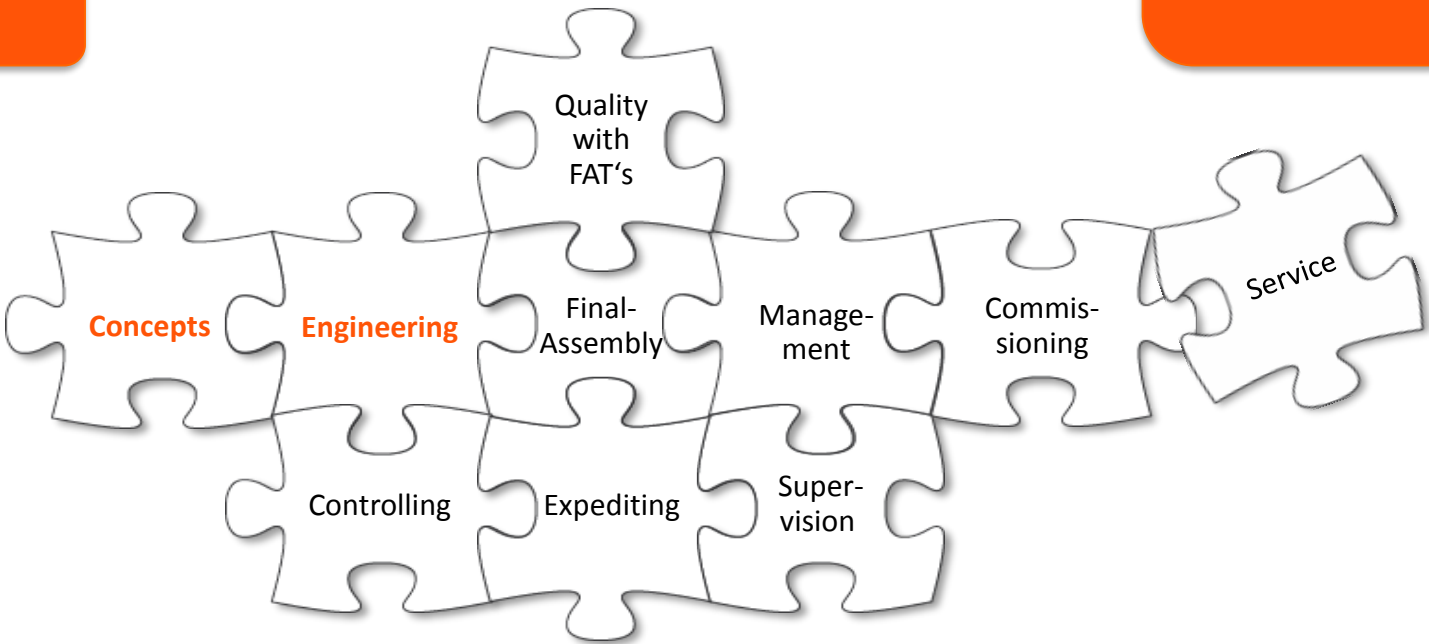


#### Role of INP Switzerland

On behalf of Hitachi Zosen Inova, INP Switzerland supported the electrical engineering portion of the project, reviewed the requirement parameters of grid operators and drew up the operating concept.

## Smart E-Engineering Services

Flexibility throughout the project



- Engineering tasks in the field of electrical engineering
- Requirement audits of grid operators (154 kV and 34.5 kV grid) and compliance checks for TSO
- Creation of the operating concept including black start of the plant



**At your service at any time**

Fair. Virtuous. Reliable. Competent. Transparent.